

GY-HM170 / 200 How to update firmware

Note

- (1) Attach both AC Adapter and Battery when updating.
- (2) Disconnect/Remove USB cable, Video cables (HDMI, SDI, A/V, etc), other cables except AC Adapter.
- (3) Do NOT power off during updating
- (4) It takes about 3 minutes for updating
- (5) After Firmware update, please go to System Menu and proceed a system reset.
This operation will be necessary for a proper update of your camcorder.

Preparation (Copying firmware to SD/SDHC memory card)

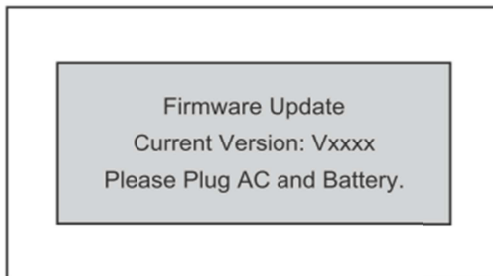
Note: Do NOT use SDHC memory card for recording. In case of using SDHC memory card, Format it with Camera.

- (1) Download the target file onto your PC from the download site and unzip it. (Double click it since it's a self extract file)
- (2) Insert the SD/SDHC memory card into your PC (or card reader) and confirm No file exists in the card. If files exist,
- (3) Copy the unzipped files onto the SD/SDHC memory card, and confirm the directory in the card as follows;
¥PRIVATE¥JVC¥GY-HM170 (in case of GY-HM200, ¥PRIVATE¥JVC¥GY-HM200)

How to update

- (1) Confirm the POWER Switch is set to the OFF position, and while pressing both "ZEBRA/5" and "MODE", turn POWER Switch set to ON.
Current firmware version is appeared on the LCD screen.

LCD screen

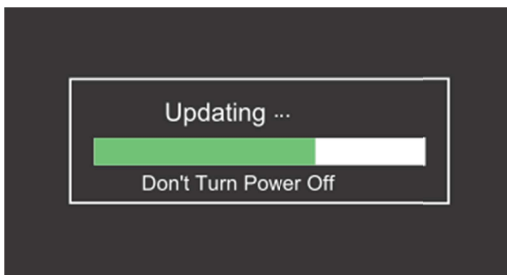


- (2) Insert SD/SDHC memory card for updating into card slot B. (Slot A is not valid for updating)

- (3) Updating will start automatically

The progress bar (as below) is displayed on the LCD screen during updating.
And also Slot A LED is OFF and Slot B LED is blinking intermittently during updating.

LCD screen



- (4) When updating is completed, "Complete" message is appeared on the LCD screen (It takes about 3 minutes for updating)
Both slot A LED and slot B LED blinks slowly and simultaneously.

LCD screen



(5) Remove SD/SDHC memory card.

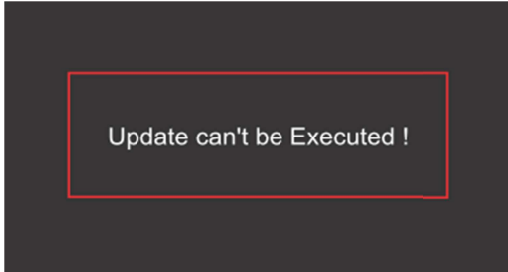
(6) Update is completed

Detach both AC Adapter and battery once from the camera, attach AC Adapter and turn POWER ON again.

When updating failed

If updating is incomplete for some reasons, the message "Update can't be Executed!" is displayed on the LCD screen on the step (4) above and slot A LED and slot B LED blink alternately.

LCD screen

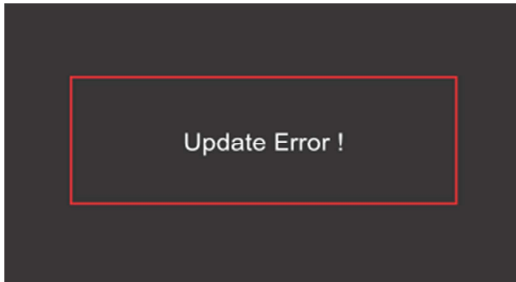


In this case, confirm whether the update file is correct or not.

Update Error

If updating can't be succeeded, "Update Error!" is displayed on the LCD screen on the step (4) above and slot A LED and slot B LED blink alternately.

LCD screen



In this case, please contact to support group since the camera might be defective.

* If the SD/SDHC memory card is not Write-Protected, the camera writes out to UPDLOG.TXT file, which file is NG when error occurred.